

CORAL & MATRIX SUPREME MB
with extra 'Star' quality.



BEST-SELLING MOTORHOMES NOW WITH MERCEDES-BENZ.

New generation Coral and Matrix motorhomes offering a more premium choice, with the Mercedes-Benz Sprinter base vehicle and some extra 'star quality'. Choose the Coral for 'atrium-style' living under the Adria exclusive design SunRoof and panoramic window, which adds light and the feeling of space. Choose the Matrix with the panoramic window and extra sleeping accommodation, with the front lift-bed.

ADRIA AND MERCEDES-BENZ. A WINNING COMBINATION.

Adria motorhomes always lead from the front and the new generation Coral and Matrix are two of our best-selling model ranges. *Best sellers for good reasons.*

CORAL: the perfect combination of style and comfort with the extra benefits of the Adria exclusive design SunRoof for atrium-style living. **MATRIX:** the perfect combination of style and versatile, with the extra benefits of the front lift bed, perfectly integrated into the ceiling space. Now you can order selected layouts of top-of-the-line Coral and Matrix Supreme models on Mercedes-Benz.



PERFORMANCE

The latest in engine design and performance from Mercedes-Benz for effortless torque and driving pleasure.



TECHNOLOGY

A choice of driver safety features including active brake assistance, active lane control, active distance assistance and hill-start assist. Airbags, electrical parking, brake, Hold function and Thermotronic automatic climate control.

Engine: 2.0 110KW / 150 HP or 2.0l 125KW / 170 HP diesel engine.

Gearbox: Manual transmission 6G or automatic transmission 9G-TRONIC.

Mercedes-Benz

A synonym for luxurious elegant design and precision engineering for performance, safety and user-friendly features.

INNOVATION

The latest in driver safety and motorhome easy living, with inspired new solutions throughout.

EXPERIENCE

Stylish Mercedes-Benz cabin with comfortable supportive seats and the MBUX Mercedes-Benz User Experience.



MEET THE NEW GENERATION

Adria new generation motorhomes are designed for living and designed to perform. Everything is meticulously designed, developed and tested to ensure your safety, comfort and enjoyment. Built to enjoy, built to last.



INSPIRED DESIGN

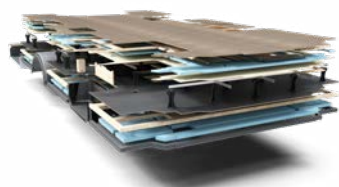
Inspired design with outstanding style and versatility.



Mercedes-Benz

EXTERIOR FEATURES

- Sleek exterior profile and front cap with integrated lights;
- Rear wall with airflow diffuser, bumper and Hella LED lights;
- Performance chassis from AL-KO expertly integrated into the motorhome body;
- Adria 'Comprex' body construction in 'silver', with choice of exterior cabin colour;
- Garage with two doors, power sockets and LED lights;
- Wide habitation door with integrated storage container;
- Central service area for easy utility connections;
- Sporty exterior graphics.



AL-KO



SIGNATURE FEATURES

Exclusive Adria signature features.

LED LIGHTS
Exclusive Hella LED multifunctional rear lights.



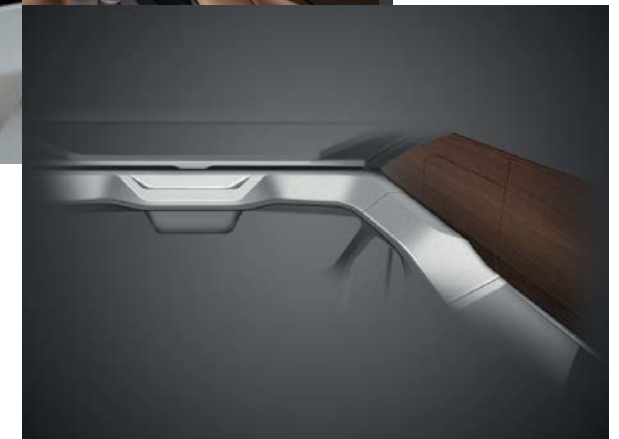
SUNROOF (CORAL)

Adria exclusive design SunRoof and panoramic window for atrium-style living, brings natural lights and adds to the feeling of space, with shading and ventilation.



PANORAMIC WINDOW (CORAL AND MATRIX)

Large panoramic window for a light and spacious feeling, with integrated blinds and open for extra ventilation.



HOOD ROOF LINING & PROFILE

Grey roof lining and elegant interior hood profile for optimized cabin and body connection and storage possibility.

INTERIOR FEATURES

- Large panoramic window (Matrix) or exclusive SunRoof (Coral);
- Lightweight construction front-lift bed (Matrix).
- Contemporary living spaces on single level, double floor.
- S-Line kitchen with large worktop, storage and the best appliances.
- Bathroom design for more space and comfort.
- Large bedroom in a choice of formats, with high quality mattresses.
- Multimedia wall, TV holder, USB port and phone charging surface.





HOME-STYLE FEELING

A feeling of home, on your travels.

Experience a home-style feeling, with a choice of interior furniture style in either Cashmere or Revere Moro.

Comfortable home environment with great living spaces and practical features, complemented by a new selection of textiles and soft furnishings.

Exclusive living room design with comfortable seating, innovative retractable seat-belt design and flexible table. Loft interior with open-plan living space. Lighting system for controllable ambiance. Sound system with hidden speakers. Organized storage, dedicated space for personal items. Heating by Alde.



Nespresso® system coffee machine for perfect coffee every time. (option)



CONTEMPORARY LIVING SPACES

Everything is designed around the way you want to live.



LIVING ROOM

New design living room with low separation wall. Loft-interior feeling with open plan living space. Panoramic window (Matrix), SunRoof (Coral). Large dinette with adjustable table. Controllable lighting with LED and spotlights.



KITCHEN

The S-Line kitchen, offers more worktop space, more storage and the best appliances. Three burner stove with optional oven. Slim solid laminate FENIX NTM® worktop. Large, soft-closing drawers. 142l slim absorption fridge.





BEDROOM

Large rear bedroom in a choice of bed formats, all with higher quality mattresses. Overhead and bedside cupboards including spot lights and USB ports. Underbed and overhead storage and bedside cupboards for personal items.



FRONT LIFT-BED (MATRIX)

Front-lift bed perfectly integrated with easy access, great lighting and ventilation. Larger bed 1300 x 2000mm, light-weight construction, with generous standing height when not in use.

BATHROOM

New bathroom design, completely restyled for more space and comfort, including new shower with elegant and functional shower wall. Mirror with spotlights and storage throughout for personal items.



INSPIRED SOLUTIONS

Innovative solutions for inspired living.

DINETTE SEAT FRAME

Unique and special retractable seatbelt support. Brings unique feeling of spaciousness. Available on SL model.



MULTIMEDIA

Multimedia wall with TV holder (up-to 32"), USB port and phone charging surface. Sound system with exciter and subwoofer, hidden speakers and Bluetooth®.

DIGITAL CONTROLLER

Easy to use and controls all main functions.



UTILITIES

Central Service Area for easy utility connections and newly located and insulated fresh water tank. Fresh and Waste water are 150l with electronic disposal

DOUBLE FLOOR

Provides a single level floor throughout and 13cm underfloor space for integrated utilities, insulation and extra storage.

STORAGE

Convex overhead cupboards with illuminated profile and easy to open mechanism. Large wardrobe design and kitchen with large capacity drawers and utensil track. Large garage with two doors, 220v/12v connectors and LED lights. Habitation door with quiet, smooth operation and multifunctional storage container.



ADRIA MACH



Pre-installation for MACH smart control mobile application. MACH and MACH Plus available as an option.



**CORAL SUPREME MB
HIGHLIGHTS**

Contemporary living spaces with Adria exclusive design Sun Roof and atrium-style living.

**MATRIX SUPREME MB
HIGHLIGHTS**

The benefits of the front lift bed in the Matrix, perfectly integrated into the ceiling space.



CORAL, a best-seller for a reason.

The perfect combination of **style and comfort**. Contemporary living spaces with the extra benefits of the Adria exclusive design SunRoof. The new living room design features extra comfortable seating and flexible dinette, giving an open plan style to the living space and kitchen. Experience a home-style feeling, with a choice of interior furniture style in either **Cashmere or Rovere Moro**.

- Mercedes-Benz Euro6 2.0l 150 HP or 170 HP diesel engine.
- Mercedes-Benz cockpit and MBUX.
- Modern 9G-Tronic (automatic) transmission or 6G manual.
- Selection of advanced driver aids.
- Adria 'Comprex' body in silver colour.
- AL-KO performance chassis.
- Adria exclusive design SunRoof.
- New design living room and dinette.
- Retractable seat-belt mechanism.
- Available with Alde heating.
- Adria MACH smart control mobile application available.

Mercedes-Benz



MATRIX, a best-seller for a reason.

The perfect combination of **style and versatile**. Contemporary living spaces with the extra benefits of the front lift bed, perfectly integrated into the ceiling space. The new living room design features extra comfortable seating and flexible dinette, giving an open plan style to the living space and kitchen. Experience a home-style feeling, with a choice of interior furniture style in either **Cashmere or Rovere Moro**.

- Mercedes-Benz Euro6 2.0l 150 HP or 170 HP diesel engine.
- Mercedes-Benz cockpit and MBUX.
- Modern 9G-Tronic (automatic) transmission or 6G manual.
- Selection of advanced driver aids.
- Adria 'Comprex' body in silver colour.
- AL-KO performance chassis.
- Front lift-bed.
- New design living room and dinette.
- Retractable seat-belt mechanism.
- Available with Alde heating.
- Adria MACH smart control mobile application available.

Mercedes-Benz

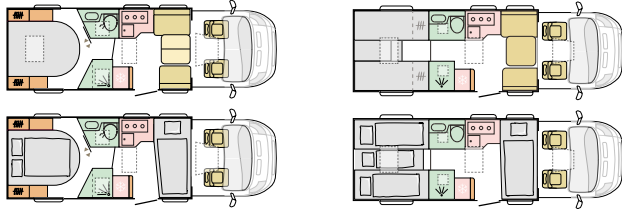


LAYOUTS

CORAL SUPREME MB

670 DC
L 7700 (mm)
W 2299 (mm) | 4 4

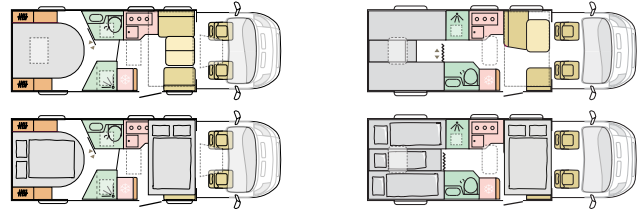
670 DL
L 7700 (mm)
W 2299 (mm) | 4 4+1



MATRIX SUPREME MB

670 DC
L 7700 (mm)
W 2299 (mm) | 4 4

670 SL
L 7700 (mm)
W 2299 (mm) | 5 4+1



EXTERIOR CABIN COLOURS



SELENITE GREY



IRIDIUM SILVER



TENORITE GREY



FURNITURE STYLE



CASHMERE - CORAL



MORO - CORAL



CASHMERE - MATRIX



MORO - MATRIX

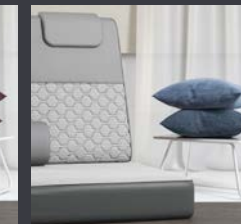
TEXTILES & SOFT FURNISHINGS



ARNO (standard)



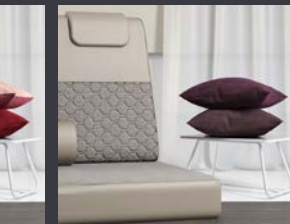
CECIL



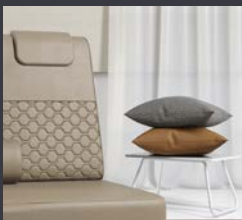
AUDREY



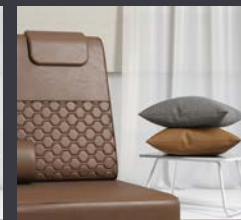
MABEL



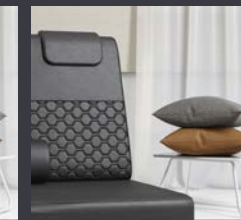
BERNICE



LEATHER CHARLES



LEATHER HARRY



LEATHER EDWARD

Discover 360 walkthroughs, layouts, specification technical data and our product configurator at www.adria-mobil.com